



Bobcat®

Hydraulic Breaker Attachment



One Tough Animal™

High performance, easy to operate

- Low maintenance
- Easy tool removal
- Reliable
- High performance
- Versatile
- Simple
- Low noise
- Multiple carrier capabilities

The new HB Series Bobcat® breakers have been designed to meet the most demanding customer requirements. Bobcat engineers started from a blank sheet of paper, developing a brand new concept which has led to many new patents. Reduced maintenance and reliability were at the top of the list of engineers' concerns—at the same time maintaining the advantages for which Bobcat is renowned: ease of mounting, versatility and maximum productivity.

Virtually maintenance free

Energy chamber with diaphragm is positioned on the top of the piston—ensuring consistent nitrogen pressure and maximum performance from the breaker. Maintenance is simplified, and no periodic recharging is necessary. It's virtually maintenance free, unlike piston-sealed systems without diaphragms. The breaker is operational as soon as it is mounted on the carrier.

New concept

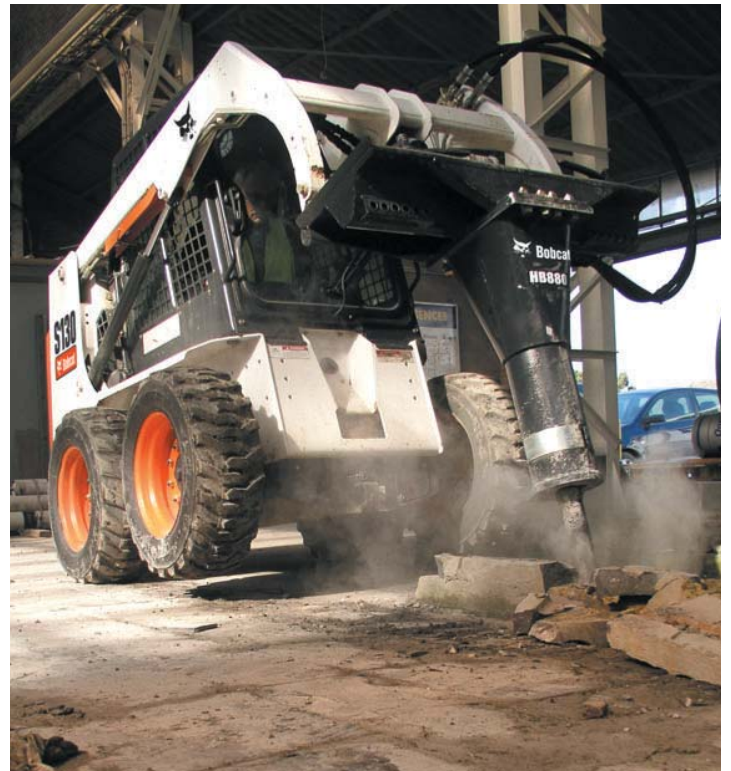
Ergonomic, compact, robust design. Reinforced tool. New dust protection. Easy access to wear parts.

Auto power

The automatic pressure regulator ensures that the breaker operates at the best possible pressure for any Bobcat model—providing maximum performance regardless of flow variations, carrier back pressure, or temperature changes. Excessive pressure is limited at the time of start-up. The energy chamber diaphragm is protected.

Silencing as standard

The upper and lower shock absorbers isolate the breaker from the housing, reducing noise and vibrations transmitted to the operator.

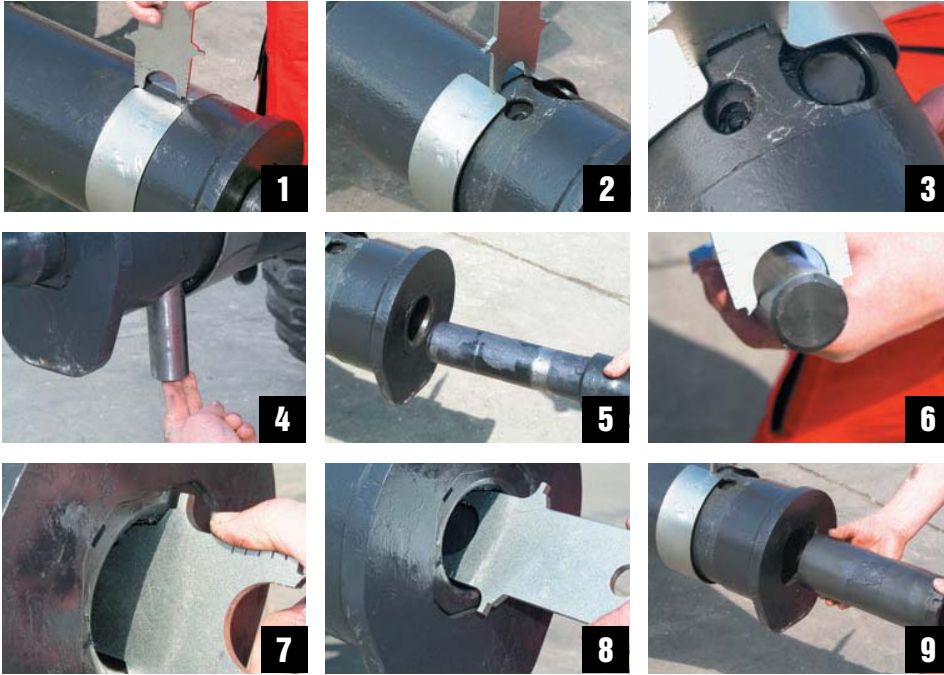




Easy and minimal maintenance

HB280-HB1180 models.

No tie-rods. The clip retains both the retaining pin and the bushing; removal of the bushing can be done easily on site. The breaker point can be removed quickly with a single multi-purpose tool. The grease zerk is protected by the clip.



Easy maintenance check:

1. Slide maintenance tool in clip opening
2. Turn maintenance tool 90 degrees to expand clip
3. Slide clip forward
4. Remove retainer pin
5. Remove breaker tool
6. Inspect retainer pin for wear using maintenance tool
7. To check bushing chamfer wear, insert maintenance tool and rotate 180 degrees
8. Reverse maintenance tool to check inside bushing-wear insert and rotate 180 degrees.
9. If wear of bushing is out of tolerance remove bushing and replace

Easy to mount

Demolition demands durability and versatility and so does Bobcat. Bobcat® breakers are easy to mount and can be utilized on a multitude of Bobcat carriers; the mini track loader, the skid-steer, all-wheel steer and compact track loaders and excavators can use the same breaker. Bobcat breakers now have more mounting options to operate on the carrier that works best for you.



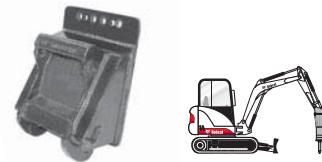
Loader mounting frame

- Bob-Tach™ mounting system, now the industry standard, makes mounting breakers to loader a snap.
- Two bolt-on sizes available.
 - Small frame for Bobcat mini loaders.
 - Standard frame for skid-steer, all-wheel steer and compact track loaders.



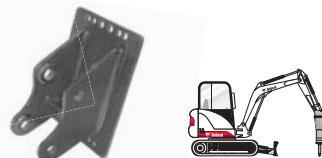
Loader X-Change mounting frame

- If you utilize your breaker on a loader and excavator and want to change between carriers, this is the frame for you.
- The loader X-Change mounting frame allows quick change from loader mount to excavator mount.
- This frame, in conjunction with the excavator X-Change mounting cap, is excellent for rental applications.
- Breaker must be equipped with an excavator X-Change mounting cap.



Excavator X-Change® mounting cap

- Allows breaker to be mounted directly to Bobcat excavators with X-Change mounting.
- The exclusive Bobcat X-Change mounting system makes changing excavator attachments fast and easy.
- Pin-through design secures breaker in place.
- Mounts available to match breaker size to excavator model.



Excavator pin-on mounting cap

- Allows breaker to be mounted directly to Bobcat 320-323 and 442 excavators with pin-on mounting.

Comfort and operator-friendly performance!

Graphic depicts HB280-HB1180 models.

Upper shock absorber:
limits noise and vibration.

Energy chamber with diaphragm:
constant performance,
no maintenance required.

AUTO POWER
Pressure regulator: ensures constant
maximum performance.

Compact soundproof housing:
practical and robust.

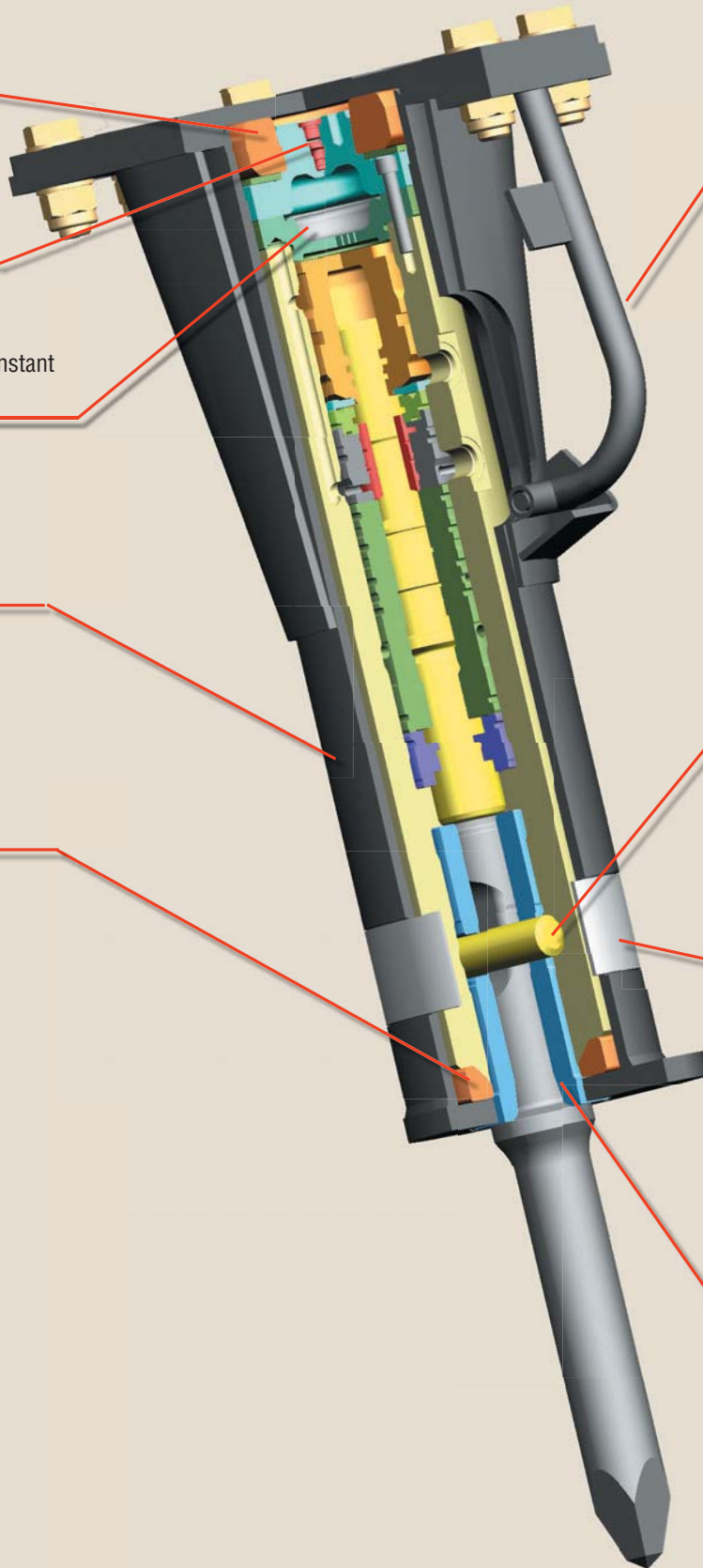
Lower shock absorber:
limits noise and vibration.

Hose guide:
contains and protects hoses.

Single retaining pin:
reduced maintenance.

Clip: fast, easy change of tool
and bushing. Easy to grease;
clip protects grease zerk.

Single sliding bushing with
integrated shank adaptor,
easy maintenance.



Bobcat® Hydraulic Breaker Attachment

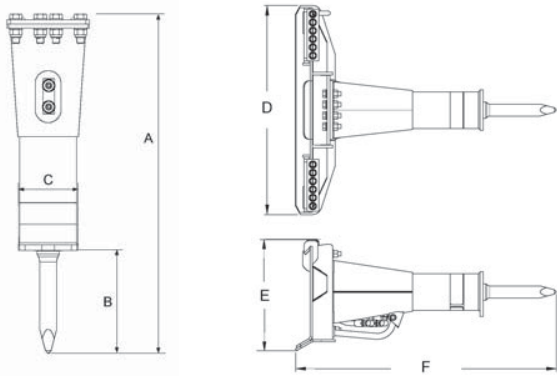
Specifications

Model	HB280	HB680	HB880	HB980	HB1180	HB2380
Performance						
Impact Energy Class	60 ft.-lb. (81 J)	150 ft.-lb. (200 J)	300 ft.-lb. (339 J)	500 ft.-lb. (650 J)	750 ft.-lb. (1016 J)	1000 ft.-lb. (1356 J)
CIMA Tool Energy Rating	59 ft.-lb. (59 J)	143 ft.-lb. (194 J)	208 ft.-lb. (282 J)	281 ft.-lb. (382 J)	384 ft.-lb. (502 J)	700 ft.-lb. (950 J)
Blows per Minute	1290 @ 6 gpm	1340 @ 13 gpm	1310 @ 17 gpm	1450 @ 21 gpm	1280 @ 26 gpm	910 @ 33 gpm
Flow Requirements	3.4-6.1 gpm (13-23 L/min.)	7-13 gpm (26-49 L/min.)	8-17 gpm (30-64 L/min.)	13-21 gpm (49-79 L/min.)	15-26 gpm (57-98 L/min.)	19.8-33 gpm (75-125 L/min.)

Estimated Breaker Performance with Concrete						
Recommended Working Thickness	1-4 in. (25-100 mm)	2-4 in. (50-100 mm)	4-10 in. (100-250 mm)	6-14 in. (150-350 mm)	8-16 in. (150-350 mm)	12-20 in. (305-500 mm)
Demolished Volume Per Hour						
Non-Reinforced	1-2 yd. ³ /hr (0.8-1.5 m ³ /hr)	1-4 yd. ³ /hr (0.8-3.1 m ³ /hr)	4-12 yd. ³ /hr (3.1-9.2 m ³ /hr)	5-15 yd. ³ /hr (3.8-11.5 m ³ /hr)	6-15 yd. ³ /hr (4.6-11.5 m ³ /hr)	10-20 yd. ³ /hr (7.6-15.3 m ³ /hr)
Reinforced	1-2 yd. ³ /hr (0.8-1.5 m ³ /hr)	1-3 yd. ³ /hr (0.8-2.3 m ³ /hr)	1-4 yd. ³ /hr (0.8-3.1 m ³ /hr)	2-6 yd. ³ /hr (1.5-4.6 m ³ /hr)	2-7 yd. ³ /hr (1.5-5.4 m ³ /hr)	4-9 yd. ³ /hr (3.1-6.9 m ³ /hr)

Weights						
Breaker w/ Nail Point & Excavator Fixing Cap	160 lb. (73 kg)	426 lb. (152 kg)	580 lb. (263 kg)	720 lbs. (327 kg)	819 lb. (372 kg)	1065 lb. (483 kg)
Breaker w/ Nail Point & Loader Mounting Frame	N/A	494 lb. (224 kg)	736 lb. (334 kg)	876 lb. (397 kg)	1050 lb. (476 kg)	1215 lb. (551 kg)
Breaker w/ Nail Point, Excavator Fixing Cap & Loader X-Change Frame	N/A	632 lb. (287 kg)	786 lb. (334 kg)	1082 lb. (490 kg)	1130 lb. (513 kg)	N/A

Dimensions						
(A) Length (Excavator Fixing Cap)	40.3 in. (1024 mm)	49.7 in. (1262 mm)	57.5 in. (1461 mm)	60.7 in. (1542 mm)	64.9 in. (1647 mm)	71.3 in. (1811 mm)
(B) Tool Length	10.6 in. (269 mm)	13.0 in. (330 mm)	13.0 in. (330 mm)	14.0 in. (356 mm)	16.0 in. (406 mm)	18.0 in. (457 mm)
(C) Breaker Lower Cradle Diameter	5.2 in. (132 mm)	7.3 in. (186 mm)	8.4 in. (214 mm)	8.8 in. (223 mm)	9.5 in. (241 mm)	9.7 in. (246 mm)
(D) Width (Loader Mounting Frame)	N/A	45.4 in. (1152 mm)	45.4 in. (1152 mm)	45.4 in. (1152 mm)	45.4 in. (1152 mm)	45.4 in. (1152 mm)
(E) Height (Loader Mounting Frame)	N/A	20.5 in. (520 mm)	20.5 in. (520 mm)	20.5 in. (520 mm)	20.5 in. (520 mm)	20.5 in. (520 mm)
(F) Length (Loader Mounting Frame)	N/A	44.7 in. (1136 mm)	52.9 in. (1344 mm)	55.9 in. (1421 mm)	60.25 in. (1530 mm)	68.7 in. (1745 mm)
Tool Diameter	1.46 in. (37 mm)	2.17 in. (55.1 mm)	2.56 in. (65 mm)	2.84 in. (72.1 mm)	3.03 in. (77 mm)	3.75 in. (95 mm)



† These recommendations should be used as a guideline only, since reinforced concrete, strength of concrete, breaker tool used, size of aggregate and age of concrete may vary. Also, breaker performance will vary with operator proficiency, type of carrier and worksite regulations.

NOTE - Where applicable, dimensions are in accordance with Society of Automotive Engineers (SAE) and ISO standards. Specifications and design are subject to change without notice. Pictures of Bobcat units may show other than standard equipment. All dimensions are shown in inches. Respective metric dimensions are enclosed by parentheses. Bobcat Company complies with the requirements of ISO 9001 as registered with BSI.

The Bobcat Attachments Advantage: Bobcat attachments are engineered and manufactured to fit Bobcat loaders for optimum job performance, dependability and durability.



Tool selection varies by breaker model. See your dealer for details.

Approved tools for Breakers:

The Special Applications Kit, which includes a half-inch polycarbonate front door with quarter-inch top and rear windows, must be used when operating Bob-Tach™ mounted hydraulic breakers where falling debris is present.

- A. In-line Chisel
 - B. Nail Point
 - C. Crosscut Wide Chisel
 - D. In-line Wide Chisel
 - E. Blunt Tool
 - F. Tamping Pad
 - G. Crosscut Chisel
 - H. Moil (Conical) Point
 - I. Crosscut Asphalt Chisel
 - J. In-line Asphalt Chisel
- These attachments may also be approved for certain new loader and excavator models. See your Bobcat dealer for details.

Bobcat Hydraulic Breaker Attachment fits these carrier models:

Mini Track Loaders:
MT52
MT55

Skid-Steer Loaders:
463
553
S70
S100
S130
S150
S160
S175
S185
S205
S220
S250
S300
S330

Compact Track Loaders:
T140
T180
T190
T250
T300
T320

All-Wheel Steer Loaders:
A300

Excavators:
316
323
325
328
329
331
334
335
337
341
425
430
435
442

Bobcat Company
P.O. Box 6000 • West Fargo, ND 58078
www.bobcat.com



Bobcat®